



Kubota RTV X-Series Metal Half Doors

p/n: 1KX1140MHD

Fits vehicle models: RTV-X CREW and RTV X1140

p/n: 1KX900MHD

Fits vehicle models: RTV-X, RTV X900, and RTV X1130



p/n: 1KX1140MHD shown on RTV X1140

California Health and Safety Proposition 65 Warning: This product may contain chemicals known to the state of California to cause cancer and birth defects or other reproductive harm.

APPROXIMATE INSTALLATION TIME:

Two Doors - 25 Minutes

Four Doors - 45 Minutes

The contents of this envelope are the property of the owner. Leave with the owner when installation is complete.

Rev. B, 05/18/2026

p/n: IM-1KX1140MHD

Curtis accessories feature an assembly of parts designed for your vehicle which require adjustment and alignment of components to accommodate vehicle variations. For accurate installation, proper operation, and years of satisfaction, please read and understand the installation and owner's manual fully prior to installing this product.

From all of us at Curtis, we thank you for choosing our product.

GENERAL INFORMATION BEFORE YOU START:

HELPFUL HINTS:

- Read and understand all instructions before beginning.
- Leave all bolts loose for later adjustment unless otherwise specified.

TOOLS REQUIRED:

- Set of Metric Sockets (3/8" Drive)
- 3/8" Drive Ratchet
- 3/8" Drive Extension
- Set of Metric Open-End Wrenches
- Set of Long Allen Sockets
- Torque Wrench
- Fir Tree Clip Removal Tool

SAFETY INFORMATION:



WARNING: TO AVOID PERSONAL INJURY OR DEATH:
Secure the doors properly.

- Pay special attention to the safety labels on the vehicle.
- Do not remove the side doors or the side retention.
- Always use the seat belts.
- Always keep arms and legs inside the operating compartment.
- Check that all doors properly lock before each use.
- Secure the door properly to lock. Lift up the latch handle to unlock.

UNIT INSTALLATION

STEP 1: (FRONT LEFT DOOR)

- 1.1 Loosen left side upper hip restraint OE bolt ~3/16" to aid in removing/installing the lower bolt. Then remove and save the lower hip restraint OE bolt. See Fig. 1.1.

Tools Required

12mm Socket

- 1.2 Locate the left latch bracket seen in Fig.1.2.

NOTE: The left and right brackets are not mirrored.

- 1.3 Loosely install the bracket by wrapping the U-Clamp around the hip restraint tubing. Secure with the provided hardware. See Fig 1.3.

Hardware Used

Hardware Used	Qty
M8x1.25x20mm Button Head Screw	1
M8x1.25 Lock Nut	1

Tools Required

M5 Allen Wrench
13mm Socket

- 1.4 Push the bracket down into place. Re-install the OE bolt and secure into place. See Fig 1.4.

Tools Required

12mm Socket

- 1.5 Tighten hardware from Step 1.3 and then the OE bolts from Step 1.1.

Torque Values

17-22 ft.-lbs.

Tools Required

M5 Allen Wrench
12mm Socket
13mm Socket

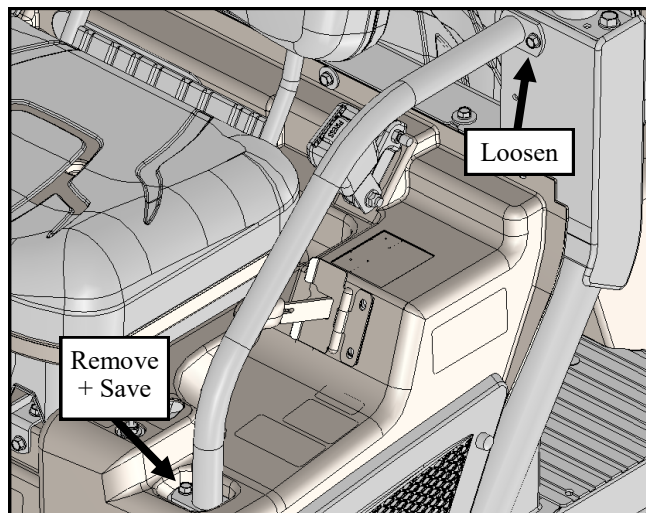


Fig. 1.1 (Left Side OE Bolt Locations)

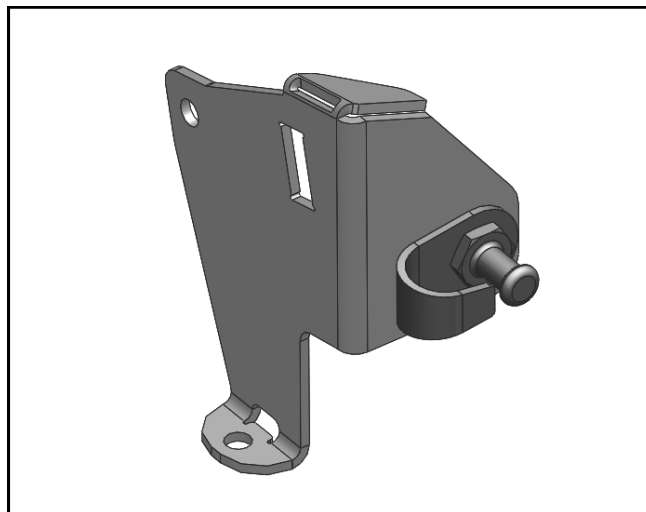


Fig. 1.2 (Left Latch Bracket)

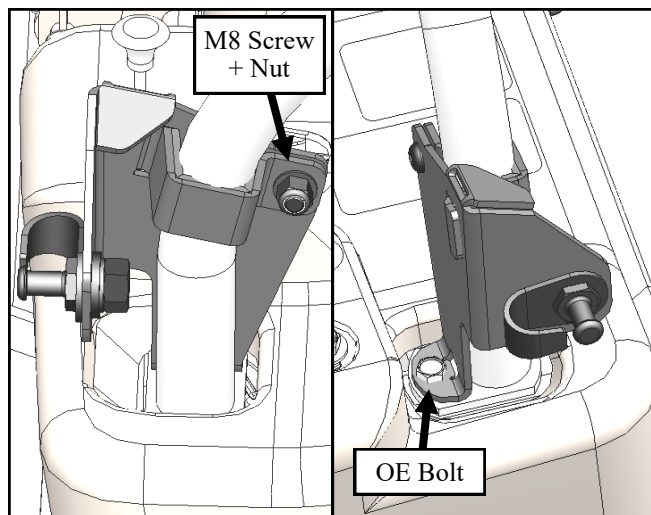


Fig. 1.3 & 1.4 (Left Latch Bracket)

UNIT INSTALLATION

STEP 1: (FRONT LEFT DOOR CONT.)

- 1.6 Remove the plastic fir tree clips from the left side of dashboard. See **Fig 1.6**.

Tools Required

Clip Removal Tool

- 1.7 Install front left door with the provided hardware. See **Fig 1.7**.

Hardware Used

M8 X 20mm Button Head Screw **Qty**
2

Tools Required

M5 Allen Wrench

Torque Values

17-22 ft.-lbs.

- 1.8 Gently close the door. If the latch and pin do not align, loosen the latch or pin (or both) and adjust to achieve proper alignment.

Tools Required

10mm Wrench (LATCH)

19mm Wrenches (PIN)

NOTE: Latch will move forwards and backwards in its slots. Pin will move up and down in its slots.

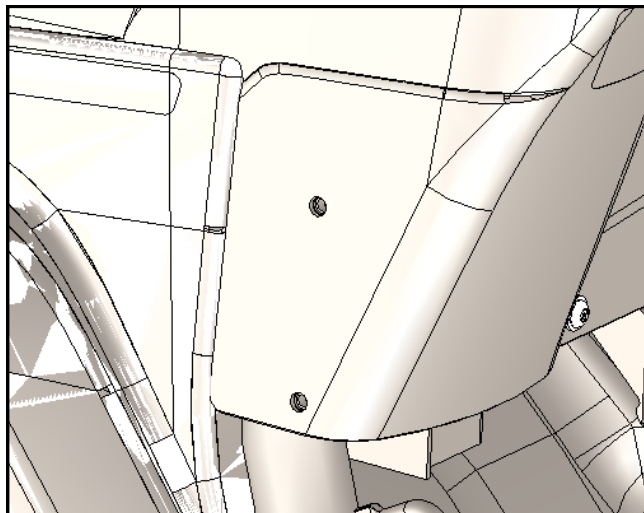


Fig. 1.6 (Fir Tree Clips Removed)

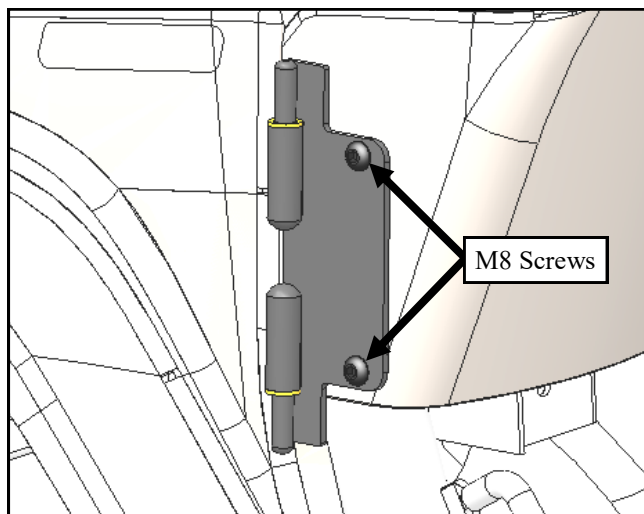


Fig. 1.7 (Hinge Attachment (Door Hidden))

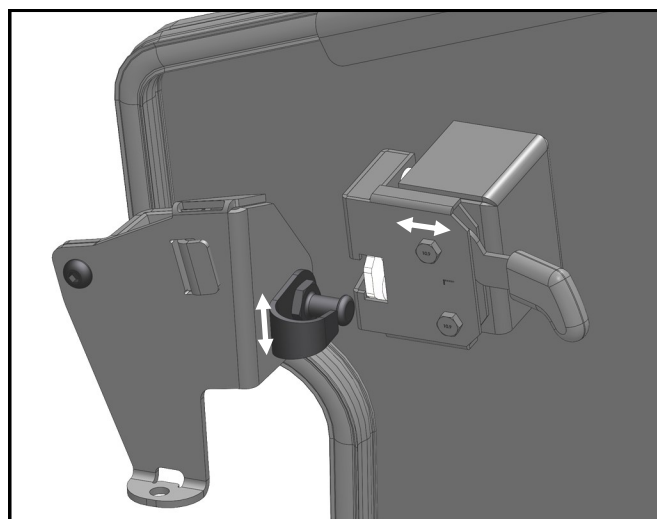


Fig. 1.8 (Pin and Latch Alignment)

UNIT INSTALLATION

STEP 2: (FRONT RIGHT DOOR)

- 2.1 Loosen right side upper hip restraint OE bolt ~3/16" to aid in removing/installing the lower bolt. Then remove and save the lower hip restraint OE bolt. See **Fig. 2.1**.

Tools Required

12mm Socket

- 2.2 Locate the right latch bracket seen in **Fig.2.2**.

NOTE: The left and right brackets are not mirrored.

- 2.3 Loosely install the bracket by wrapping the U-Bracket around the hip restraint tubing. Secure with the provided hardware. See **Fig 2.3**.

Hardware Used

<u>Hardware Used</u>	<u>Qty</u>
M8x1.25x20mm Button Head Screw	1
M8x1.25 Lock Nut	1

Tools Required

M5 Allen Wrench
13mm Socket

- 2.4 Push the bracket down into place. Re-install the OE bolt and secure into place. See **Fig 2.4**.

Tools Required

12mm Socket

- 2.5 Tighten hardware from Step 2.3 and then the OE bolts from Step 2.1.

Torque Values

17-22 ft.-lbs.

Tools Required

M5 Allen Wrench
12mm Socket
13mm Socket

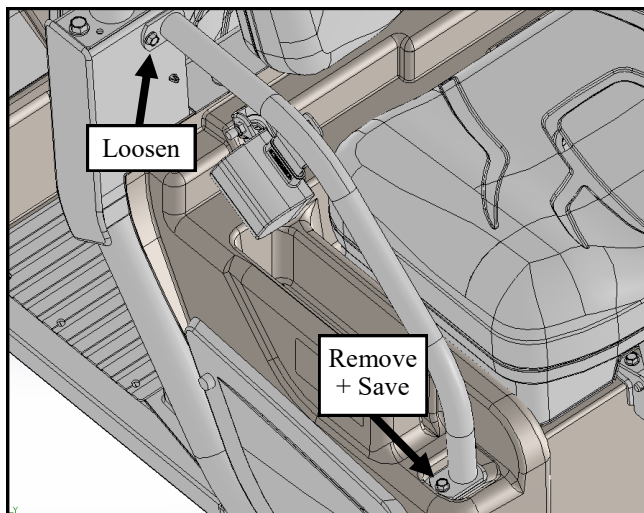


Fig. 2.1 (Right Side OE Bolt Locations)

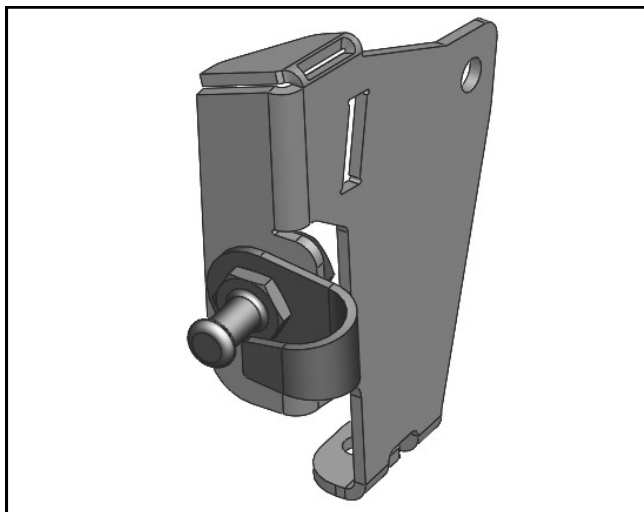


Fig. 2.2 (Right Latch Bracket)

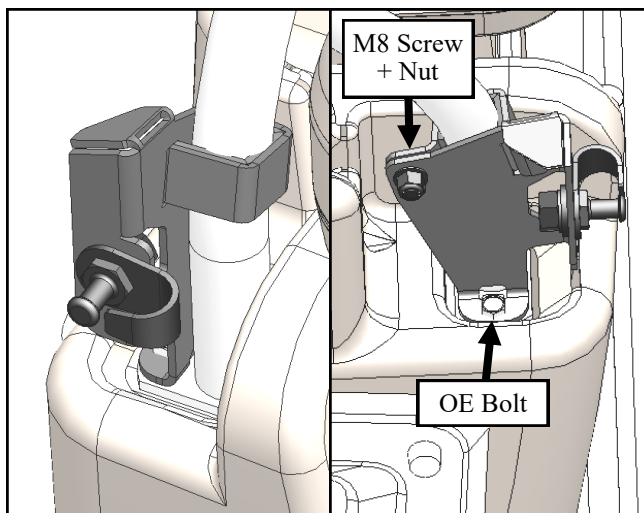


Fig. 2.3 & 2.4 (Right Latch Bracket)

UNIT INSTALLATION

STEP 2: (FRONT RIGHT DOOR CONT.)

2.6 Remove the plastic fir tree clips from the right side of dashboard. See **Fig 2.6**.

Tools Required

Clip Removal Tool

2.7 Install front right door with the provided hardware. See **Fig 2.7**.

Hardware Used

M8 X 20mm Button Head Screw

Qty
2

Tools Required

M5 Allen Wrench

Torque Values

17-22 ft.-lbs.

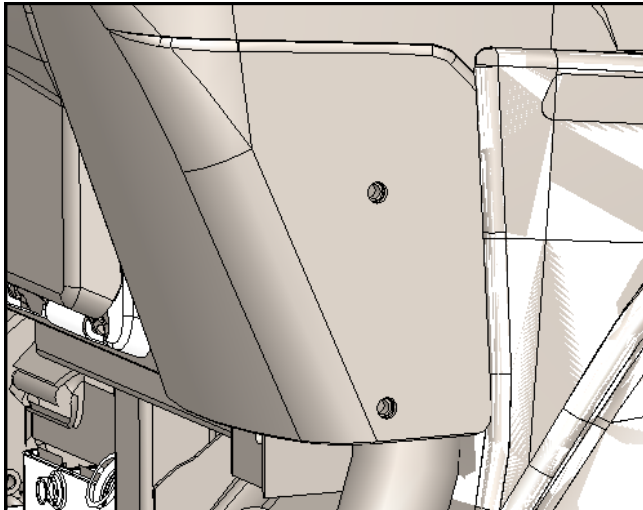


Fig. 2.6 (Fir Tree Clips Removed)

2.8 Gently close the door. If the latch and pin do not align, loosen the latch or pin (or both) and adjust to achieve proper alignment.

Tools Required

10mm Wrench or Socket (LATCH)

19mm Wrenches (PIN)

NOTE: Latch will move forwards and backwards in its slots. Pin will move up and down in its slots.

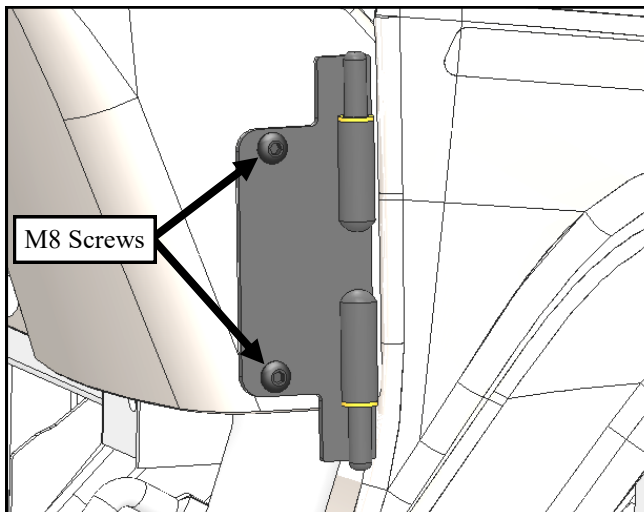


Fig. 2.7 (Hinge Attachment Isolated View)

UNIT INSTALLATION

NOTE: If installing on an RTV-X, RTV X900, or RTV X1130, disregard the following Rear Door Installation section and discard the rear door hardware. Installation is complete.

STEP 3: (REAR DOORS)

- 3.1 Set the rear seat and seat back into the lower position. Remove and save the M10 pivot bolt. See Fig. 3.1.

Tools Required

14mm Socket

- 3.2 Remove and discard the two bolts securing the seat base pivot bracket. See Fig. 3.2.

Tools Required

12mm Socket

- 3.3 Install the provided left rear striker bracket. Loosely secure the striker bracket to the seat base pivot bracket using the provided hardware. See Fig. 3.3.

Hardware Used

M8x1.25x20mm Socket Cap Screw **Qty**
2

Tools Required

Long M6 Allen Socket

NOTE: Tight tool clearance for lower bolt.

- 3.4 Use the bolt saved from step 3.1 and secure it into the seat back pivot. See Fig. 3.3.

Tools Required

14mm Socket

- 3.5 Tighten hardware from steps 3.3 and 3.4.

Hardware

M8, gr 8.8

M10, gr 8.8

Torque Values

17-22 ft.-lbs.

34-40 ft.-lbs.

Tools Required

Long M6 Allen Socket

14mm Socket

- 3.6 Repeat on the opposite side.

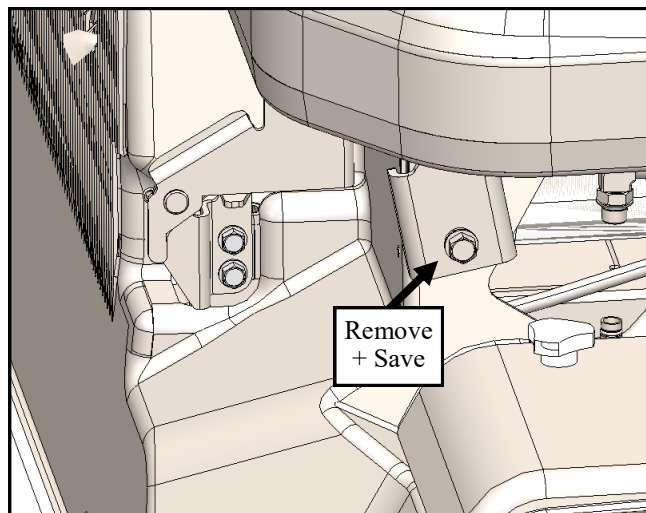


Fig. 3.1 (Remove OE Bolt)

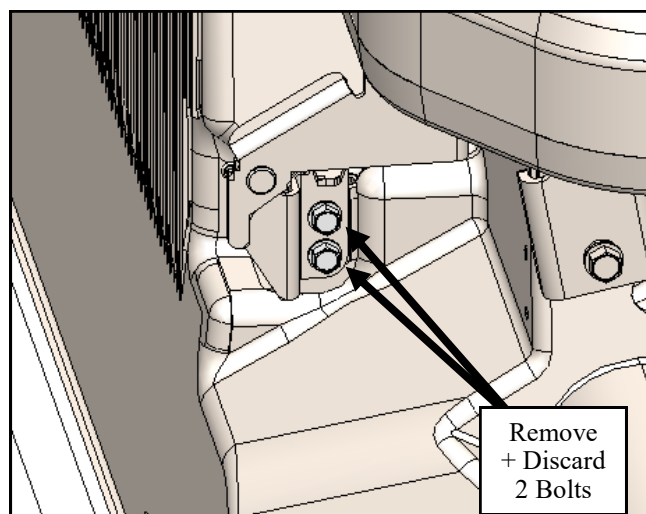


Fig. 3.2 (Remove Base Pivot Bracket OE Bolts)

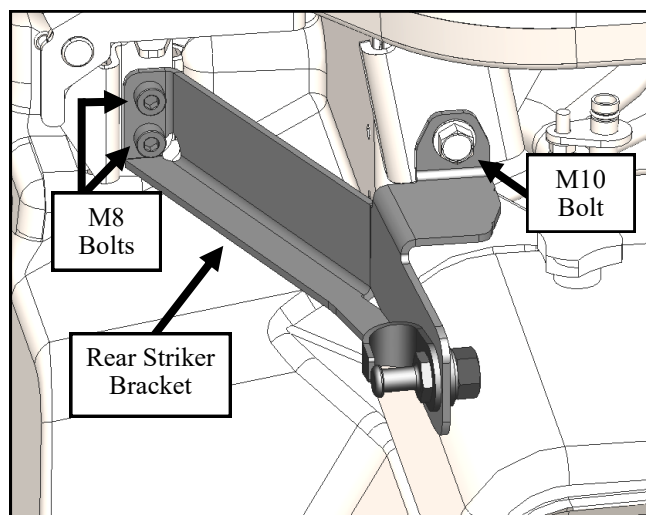


Fig. 3.3 (Install Left Rear Striker Bracket)

UNIT INSTALLATION

STEP 3: (REAR DOORS CONT.)

- 3.7 Remove and save the M8 bolt and washer as shown in **Fig 3.7**.

Tools Required

12mm Socket

- 3.8 Remove the two plastic fir tree clips from the rear floor pan where shown in **Fig 3.8**.

Tools Required

Clip Removal Tool

- 3.9 Install the left b-pillar/rear door assembly and loosely secure the top with the M8 bolt and washer from Step 3.7. See **Fig. 3.9**.

Tools Required

12mm Socket

- 3.10 Secure the bottom of the b-pillar to the floorboard with the hardware provided. See **Fig. 3.10**.

Hardware Used

<u>Hardware Used</u>	<u>Qty</u>
M6x1.0x20mm Button Head Screw	2
1/4" X 1.25" Fender Washer	2
M6 Nut	2

Tools Required

M4 Allen Wrench
10mm Wrench

- 3.11 Tighten the M8 screw and the (2) M6 screws.

Hardware

M8
M6

Torque Values

5 ft.-lbs.
5.8-9.4 ft.-lbs.

NOTE: M8 screw has a lower torque value as it goes through plastic.

Tools Required

M4 Allen Wrench
10mm Wrench
12mm Socket

- 3.12 Gently close the door. If the latch and pin do not align, loosen the latch or pin (or both) and adjust to achieve proper alignment.

Tools Required

10mm Wrench or Socket (LATCH)
19mm Wrenches (PIN)

NOTE: Latch will move forwards and backwards in its slots. Pin will move up and down in its slots.

- 3.13 Repeat on the opposite side.

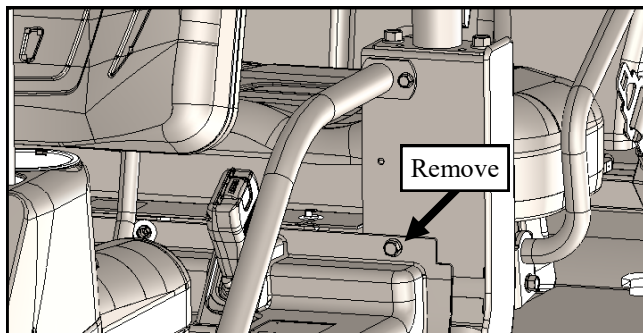


Fig. 3.7 (Left Side OE Bolt)

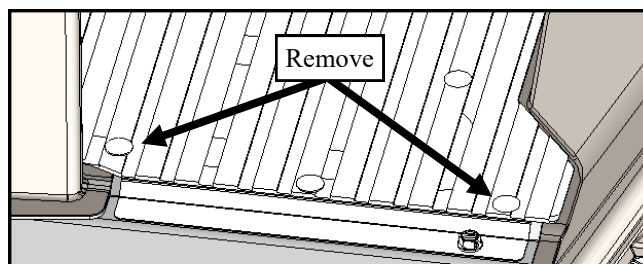


Fig. 3.8 (Remove 2 Fir Tree Clips)

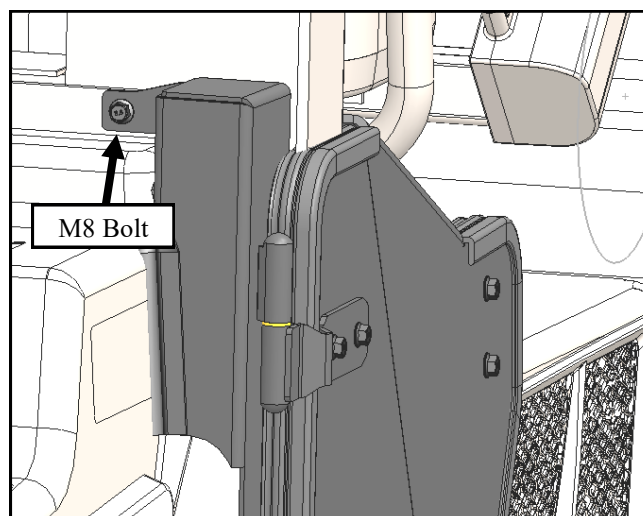


Fig. 3.9 (Install Left B-Pillar/Rear Door)

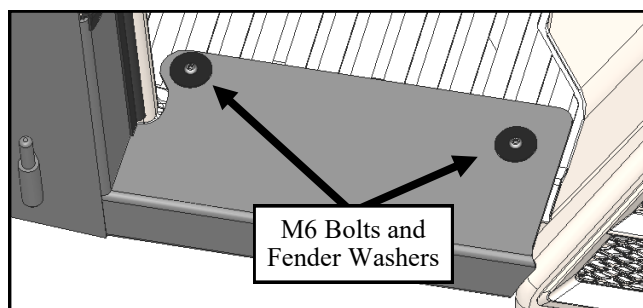


Fig. 3.10 (Left Side Floorboard)