

**John Deere Gator HPX, XUV
Factory Cab Replacement Doors
p/n: 1GXUVFCRDS**

The contents of this manual are the property of the owner.
Be sure to leave with the owner when installation is complete.



APPROXIMATE INSTALLATION TIME: 1/2 hour (not including accessories)

OPTIONS:

- 9LEDW2- Roof Mount 3" x 5" Oval LED Worklight Set
- 9LEDW3- 3" round LED Worklight Set
- 9PH20S30- UTV Heater
- 9LEDS2- Roof Mount LED Strobe Light
- 9LEDD10- Directional LED Swivel Dome Light
- 9PM5- Side View Mirror Kit

BEFORE YOU START:

- Read and understand all instructions before beginning.
- To assist with the door installation, leave all bolts loose for later adjustment unless otherwise specified.
- Begin the bolt engagement by hand to guard against potential cross threading.

SAFETY INFORMATION:

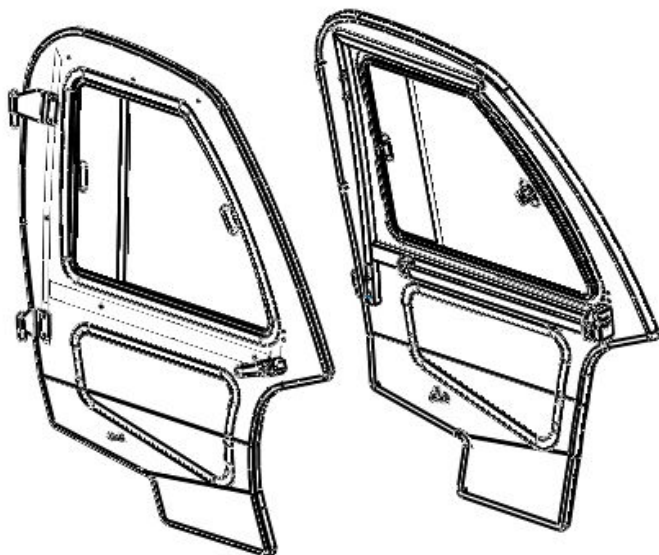
▲ WARNING: Cabs and general accessories add additional weight to the base vehicle. Deduct the accessory's total weight from the vehicle's rated capacity including driver and passenger. Never operate the vehicle outside of its rated weight capacity.

▲ WARNING: Exposure to Carbon Monoxide can cause illness, serious injury or death.
 Never operate vehicle if suspicious of Carbon Monoxide. Inspect exhaust system for leaks monthly. Leaks can result from loose connections, corrosion, cracks or other damage to the exhaust manifold. If leaks are found, repair or replace exhaust system. Do not use vehicle until repair or replacement is complete.

▲ WARNING: Serious injury or death:
 ▲ This door set does not provide protection from flying objects including golf balls.
 • This door set does not provide protection from lightning. When lightning threatens, take cover and do not operate vehicle.

PARTS IN THIS KIT:

8SV-GFCXV07L-B4
 LEFT DOOR, ALUMINUM

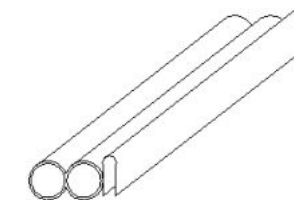


8SV-GFCXV07R-B4
 RIGHT DOOR, ALUMINUM

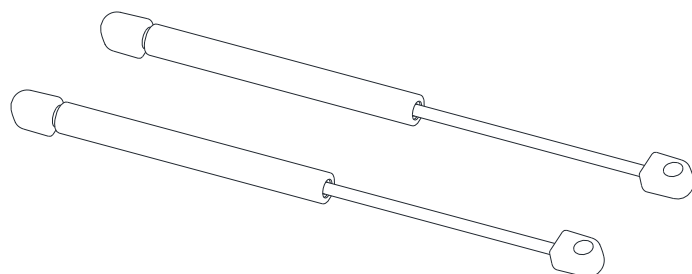
8SV-GFCXV08L-B4
 LEFT STRIKER ASSEMBLY



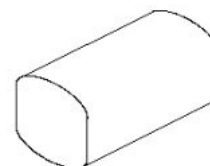
8SV-GFCXV08R-B4
 RIGHT STRIKER ASSEMBLY



9SV-PR41-5
 1-1/2" SIDE BULB RUBBER



9SV-GS02Q
 GAS SHOCKS
 12" with Quick Release Ends
 (set of 2)



9SV-GFCXVRHWK
 HARDWARE KIT

ADDITIONAL SERVICE PARTS:

- **8SV-GFCXVDHL-B4**..Hinge Pin Set, top and bottom left
- **8SV-GFCXVDHR-B4**..Hinge Pin Set, top and bottom right
- **9SV-GS02Q**..... Gas spring, 12" w/Q.R
- **9SV-DL01H-4**.....Keys for Door Handle (2 sets)
- **9SV-DL02**.....Door Latch kit, non-locking w/ grab handle (set of left/right)
- **8SV-SWGFC2L**..Sliding Window, Left, with rubber
- **8SV-SWGFC2R** ..Sliding Window, Right, with rubber
- **8SV-GFCLW-L**.....Lower Window, Left, with rubber
- **8SV-GFCLW-R**.....Lower Window, Right, with rubber
- **9SV-PR38-15** ... 3/4" Side Bulb Rubber, 1/4" grip, 15-Foot Length
- **9SV-GS02A**..... Ball Studs, 10mm (bag of 10)
- **9SV-PR36-15**...Rear Sliding Window Rubber - 15 foot length
- **9SV-IHRL**.....Inside Handle Rotary Latch Kit (includes a left and a right)
- **9SV-OHRL**.....Outside Handle Rotary Latch Kit (set of 2)
- **9SV-DSTRH**.....Door Striker Kit - includes case hardened striker bolt

Tools Required (for adjustments only):

- Ratchet with 1/2" and 10mm sockets.
- 1/2" open-end wrenches
- Two 3/4" open-end wrenches.
- Snips

DOOR INSTALLATION:

1. Remove existing strikers.
Using hardware listed below, attach new striker assemblies to fillers as shown. **(FIGURE 1)**

<u>Qty.</u>	<u>Hardware</u>
2/side	M6x20mm carriage bolts
2/side	6mm flat washers
2/side	M6 nylon locking nuts

2. Remove existing gas shock mounts from fuel tank shroud and air filter close out panel. Install new gas shock mounts with the hardware listed below. **(Figure 2)**

<u>Qty.</u>	<u>Hardware</u>
1/side	5/16-18 X 1/2" flange bolt
1/side	5/16-18 coupling nut
1/side	ball stud

3. Remove trim lock from front fillers. **(Figure 3)**
4. Replace trim lock with ball rubber **(Figure 4)**.

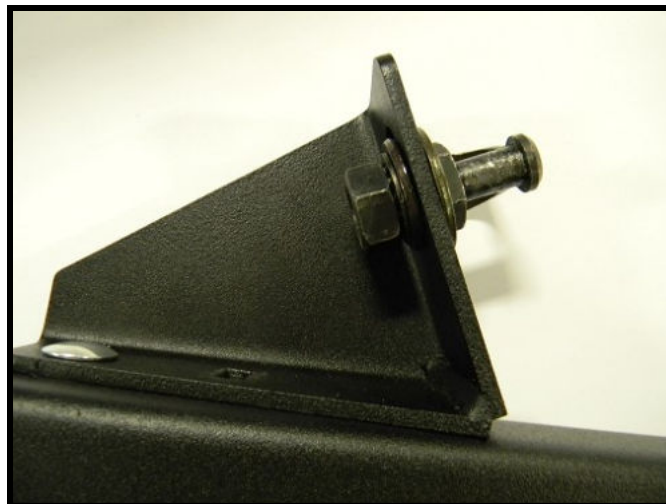


Figure 1:

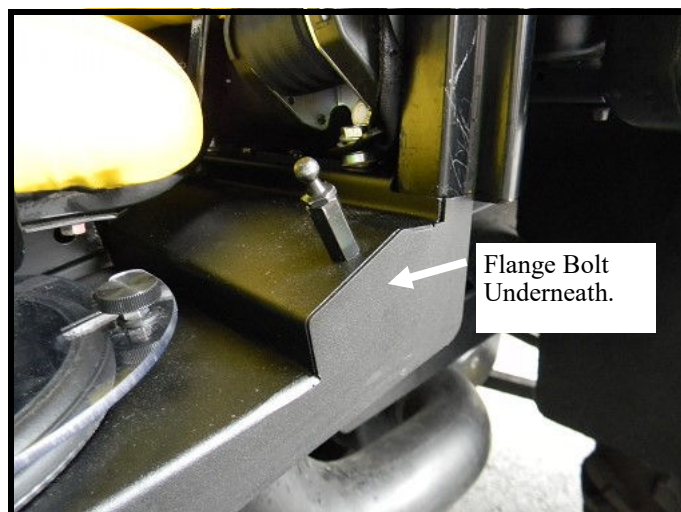


Figure 2:



Figure 3:



Figure 4:

DOOR INSTALLATION:

5. Holding the door perpendicular to the vehicle, lower the door hinge pins into the hinge sleeves on the vehicle. (**Figures 5 and 5a**).

NOTE: Loosen the bolts on the hinge pins on the door if the pins do not slide easily and fully into the sleeves.

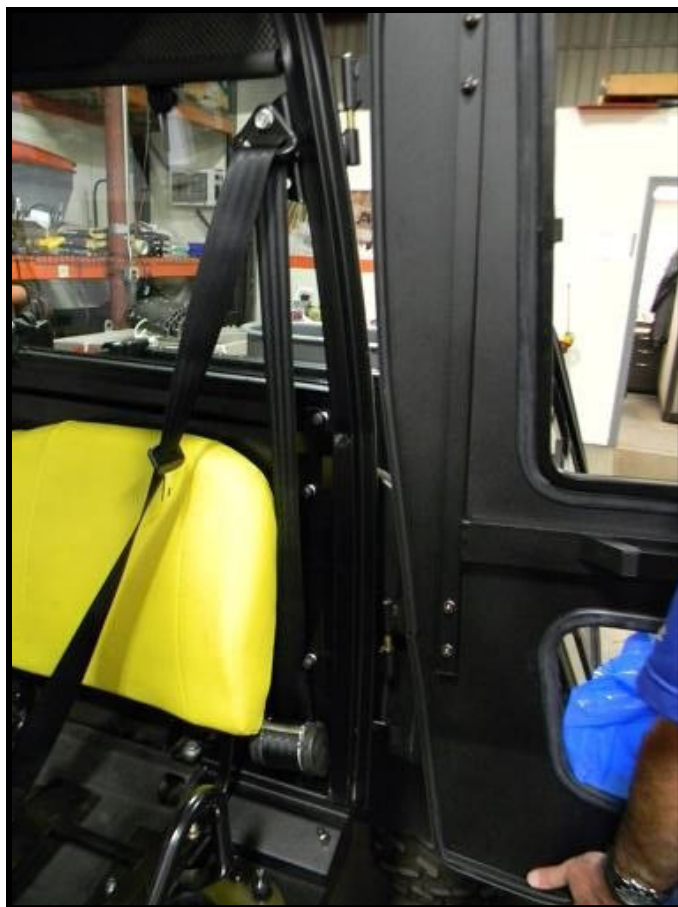


Figure 5:

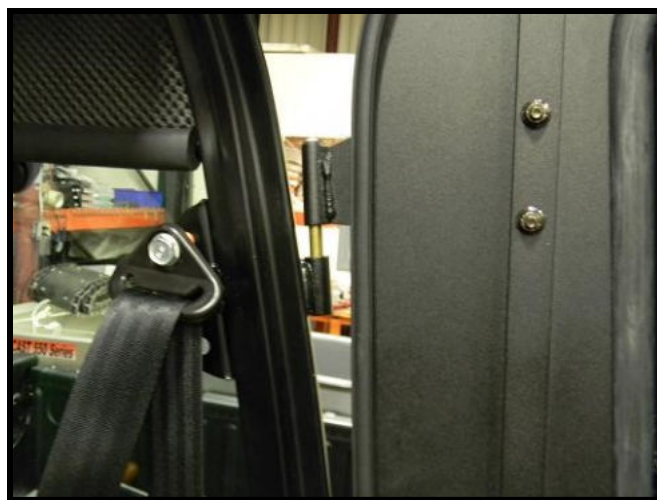


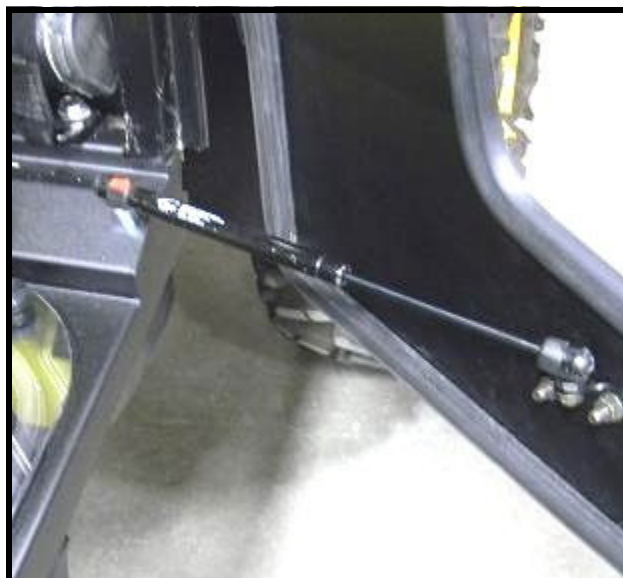
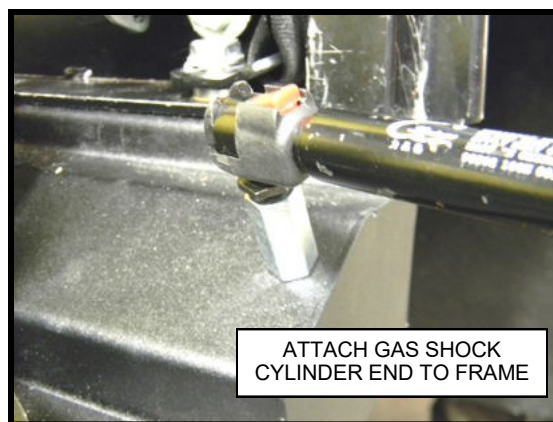
Figure 5a:

DOOR INSTALLATION:

6. Gently close the door, lifting on the door handle if necessary, to allow the latch to lock around the striker pin.
Lift door up or down to align with vehicle.
Clamp door closed. **(Figure 6)**
With the door latch engaged 2 clicks around the striker pin, adjust striker mount and pin to attain tight seal. Tighten striker hardware.
7. If loosened in step 5, have an assistant sit inside the vehicle and tighten the (4) 5/16-18 hinge bolts and nuts.

Note: See Door Troubleshooting section on page 6 for information about adjusting the door latches and hinges.

8. Open the door to slightly less than 90°. Install the Gas Shock onto the Ball Studs on air intake assembly and fuel shroud assembly. The cylinder end must be attached to the frame as shown to ensure seals stay lubricated. **(Figures 7 and 7A).**
9. Remove protective film from inside and outside of both lower windows.

**Figure 6:****Figure 7:**

ATTACH GAS SHOCK
CYLINDER END TO FRAME

Figure 7a

DOOR TROUBLESHOOTING

Condition	Possible Solution
<ul style="list-style-type: none"> Door latch and striker pin don't line up vertically 	<ul style="list-style-type: none"> Loosen striker pin and move up or down. Use (2) 3/4" wrenches to adjust striker pin.
<ul style="list-style-type: none"> Door latch and striker pin don't line up horizontally 	<ul style="list-style-type: none"> Loosen striker mount screws. Move striker mount forward or backward.
<ul style="list-style-type: none"> Door is not aligned to vehicle 	<ul style="list-style-type: none"> Loosen door hinges. With the door unlatched, lift up (or lower down) on the door handle until the door is aligned with the vehicle. Have an assistant sit inside the vehicle and determine the new height required for the striker pin. Have the assistant adjust the height of the striker pin. Re-latch the door and tighten all fasteners.
<ul style="list-style-type: none"> Door latch is unable to be double-latched (2 clicks have not been heard) 	<ul style="list-style-type: none"> Loosen striker mounts Move striker mount in and out

CARE AND MAINTENANCE

Check and tighten all hardware after 20 hours of operation. Periodically inspect and tighten hardware for the remainder of the unit's service life. Keep the enclosure components clean in order to prevent dust and dirt from forming an unattractive film. The life of your cab components depend upon following these care procedures:

- NEVER USE AN ABRASIVE DETERGENT / VEHICLE CLEANER OR A WIRE BRISTLED BRUSH.** Do not use any **CITRUS BASED CLEANERS** such as orange or lemon.
- NEVER USE AN ALCOHOL-BASED PRODUCT FOR CLEANING PLASTIC LOWER WINDOWS.** Do not use **WINDEX, GLASS PLUS, FANTASTIC**, etc. Use of these products will result in deterioration of the plastic windows.
- Clean the enclosure surfaces thoroughly with warm soapy water and a COTTON cloth or chamois. Be sure to use mild soap, specifically a dish liquid or equivalent. Clean in a light circular motion for best results.
- Remove grease and oil with mineral spirits and a COTTON cloth.