



CURTIS CAB SYSTEM FOR YAMAHA VIKING



Perfect for any condition!



YAMAHA VIKING III
(PN: 1YAMVK)

Curtis All-Steel Cab For 2015-2018 Yamaha Viking III

CURTIS PREMIUM FEATURES

Lockable Doors & Textured Powder-Coat Finish

Heavy Duty Steel Hinges Eliminate Door Flex

Dual Sliding Door Windows

Dual Windshield Wipers

Venting Windshield, Door & Rear Panel Slider

Durable 16 Gauge Powder Coat Steel Doors

Door Windows Remove Quickly w/ 4 Thumbscrews

Curtis Total Seal System

CURTIS QUALITY ACCESSORIES

LED WORK LIGHTS AND STROBES

Illuminate your Work Area and Increase Safety with Work Lights and Strobes from Curtis. Magnetic Base Strobe Light Recommended.



SIDE VIEW MIRROR KIT

Two Mirrors per Kit. Includes all Mounting Hardware. Durable and Stylish.



HEATER

Mounts behind dash – does not reduce legroom. Directional vents for comfort. Powerful forced hot water heater.





CURTIS CAB SYSTEM FOR YAMAHA VIKING

Cab Uses Factory Roof with Added Sealing Rubber Which Reduces Cost and Installation Time

Rear Panel Slider Provides Excellent Ventilation

Extreme Visibility with Acrylic Clear View Rear Panel

Total Seal System with Full Rubber Seal Around Doors

Large Dual Opening Sliding Windows

Dual Wipers for Excellent Visibility

Lockable Doors



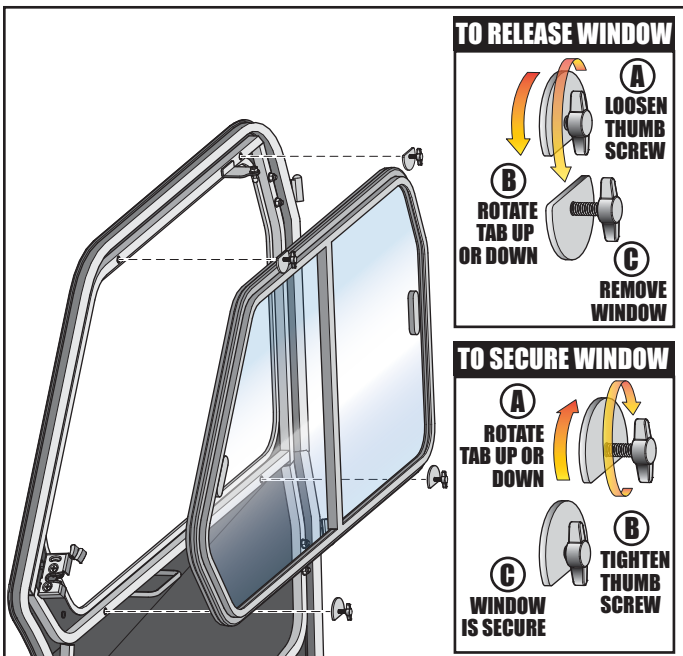
16 Gauge Steel Doors with Heavy Duty 7 Gauge Steel Hinges

Can be Transported on Open Trailer at Highway Speeds

Enhancing our Customers' Comfort and Productivity Every Day  More Innovation. More Value.

Exclusive Curtis Quick-Out Door Windows for Yamaha Viking

Optional Low-Profile LED Roof Mount Work Lights



AUTHORIZED DEALER

(PN: 1YAMVK)

YAM 03 (02/19)

VIKING IS A REGISTERED TRADEMARK OF YAMAHA CORPORATION. CURTIS INDUSTRIES, LLC AND ITS PRODUCTS ARE NOT ENDORSED BY OR AFFILIATED WITH YAMAHA CORPORATION.

70 Hartwell Street | West Boylston, MA | 01583 | 508-853-2200 | www.CurtisCab.com